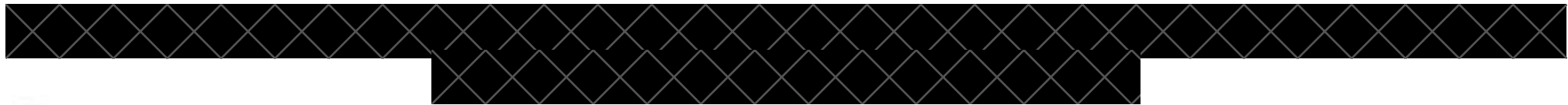




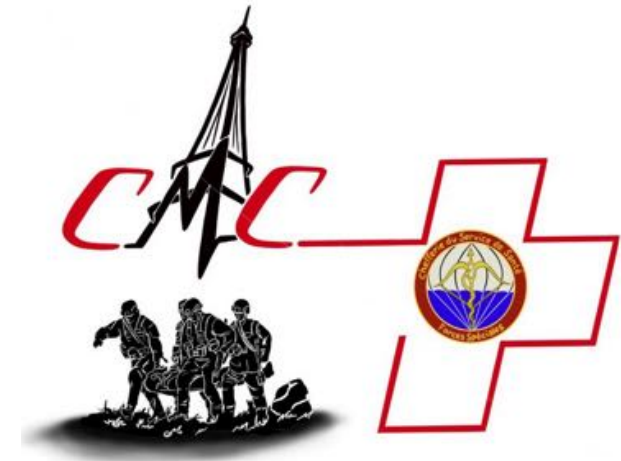
# Deployment of the Surgical Life-saving Module (SLM) in 2017:



lessons learned in setting up and training  
operational surgical units



SLM members.



SLM...



SPECIAL FORCES



# LOCAL MEDICAL EVACUATION CHAIN





# The SLM...





## SLM : personnel staffing



Nurse anesthetist

Anesthesiologist/  
intensivist

General surgeon

Head-neck  
surgeon

Operating room  
nurse

Combat medic



# SLM SETUP



# 1<sup>st</sup> SLM SETUP



Emergency room



Operating room



Supply kit



# 1<sup>st</sup> SLM DEPLOYMENT





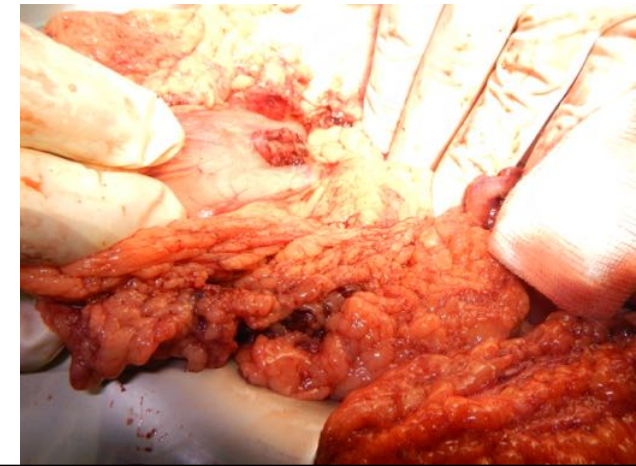
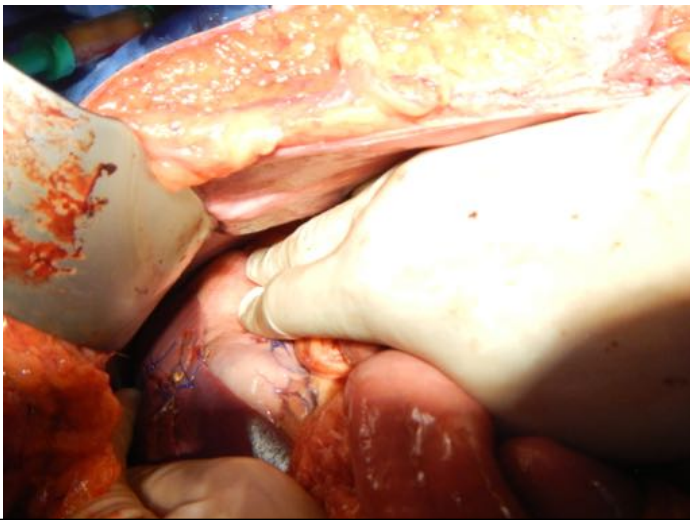
## 2<sup>nd</sup> DEPLOYMENT







# ABDOMEN INJURIES / PROCEDURES

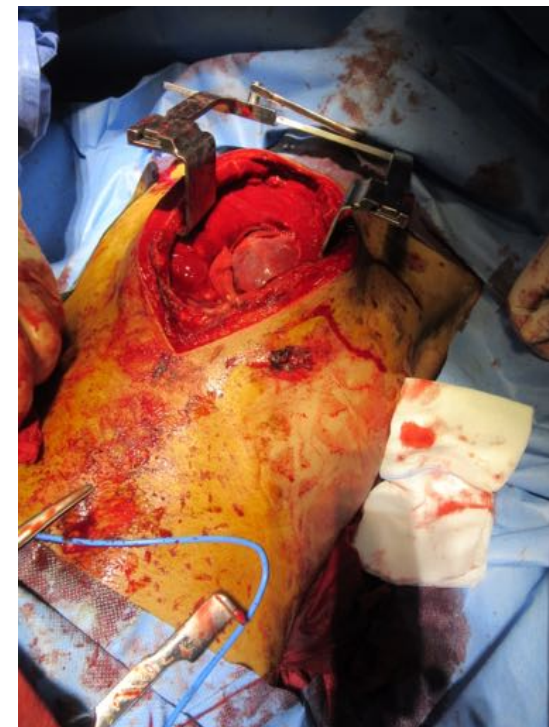


# ABDOMEN INJURIES / PROCEDURES



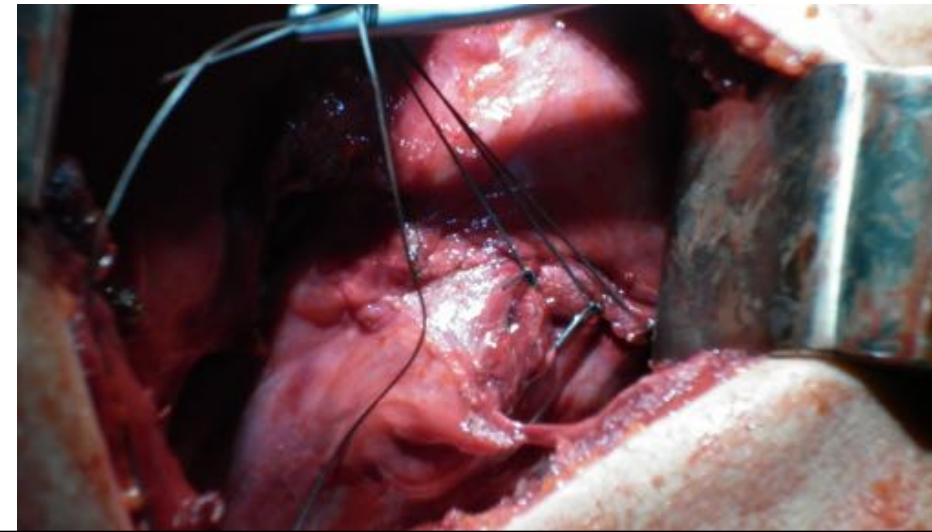
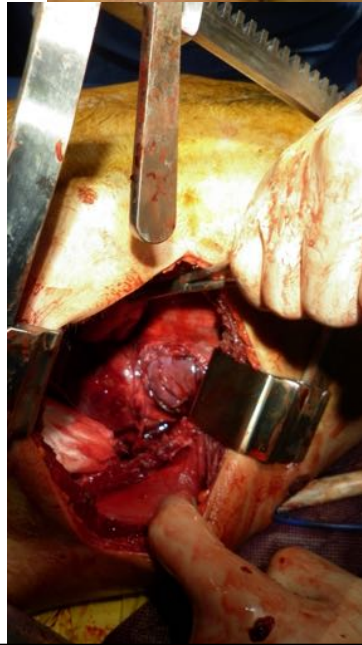
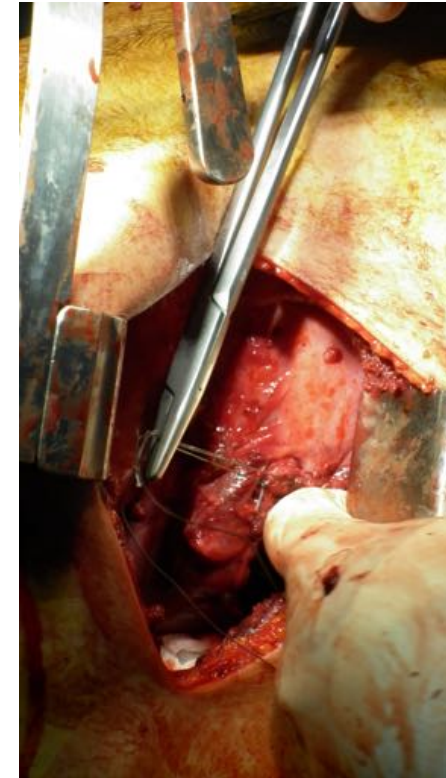
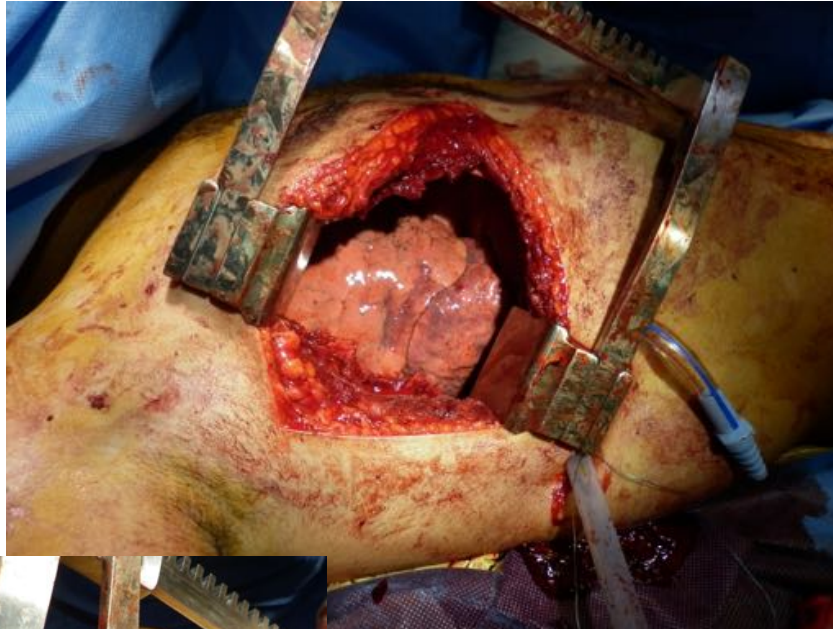


# THORAX INJURIES / PROCEDURES



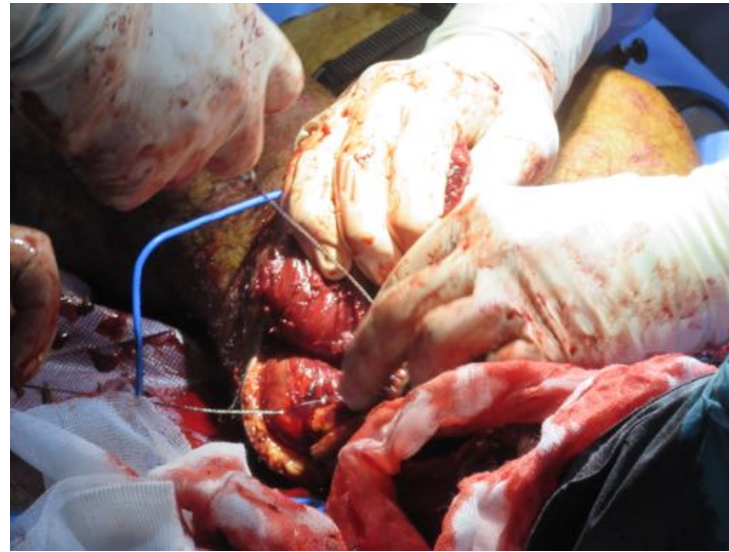


# THORAX INJURIES / PROCEDURES





# LIMBS INJURIES / PROCEDURES



# NEUROSURGERY



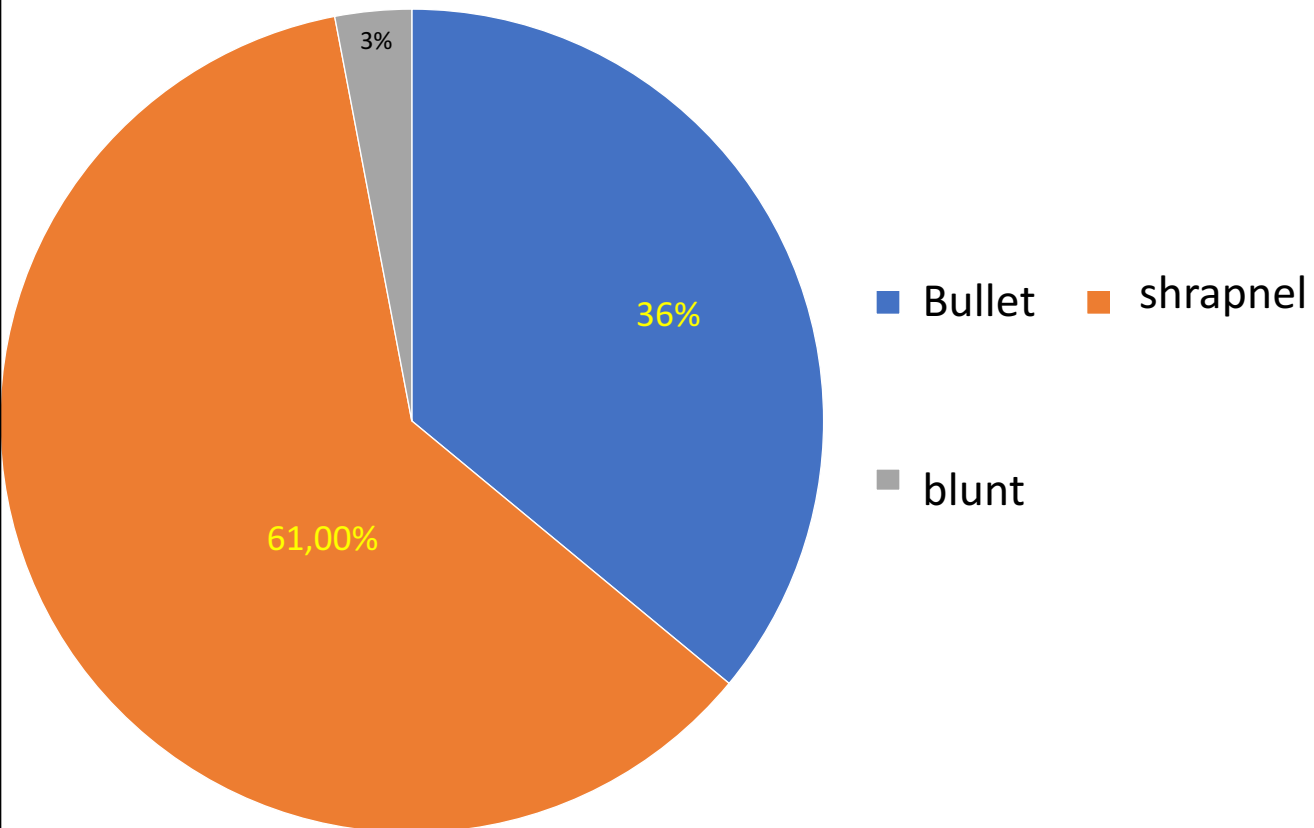




## SLM DEPLOYMENT IN 2017

### Results

- 2017
- 157 casualties
- 190 surgical procedures





## Results

### ■ Demographic:

Males 100%

41 successive waves

Mean : 4 casualties per wave

### ■ Injury profil

### ■ Severity:

Average ISS : 8,5 (1-25)

ISS>15: 26

Average NISS : 10,8 (1-75)

NISS>15: 34

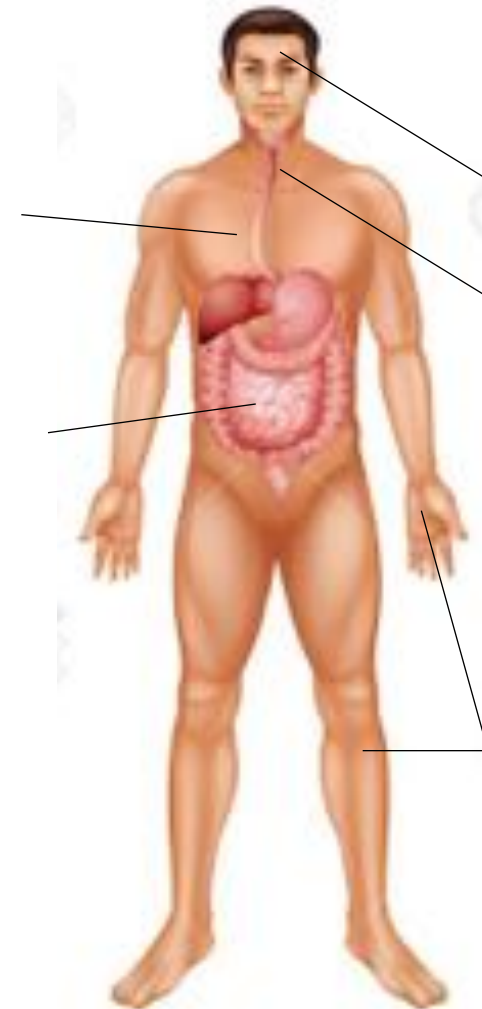
Thorax : 18%

Abdomen: 13%

Head : 11%

Neck : 2%

Limbs : 56%,







## SLM DEPLOYMENT IN 2017

### Results

Emergency room	Nbr
Wound exploration Debridement Dressing	126
Thoracic drain	12
Limb splint	7
Femoral traction	1

Surgical procedures	Nbr
Laparotomy	16
Amputations	12
Thoracotomy	7
Limb fasciotomy	2
External fixator	2
Cervicotomy	1



## SLM DEPLOYMENT IN 2017

### Results Digestive surgery

Hemostatic procedures		
Liver packing	DC	1
Liver suture		1
Splenectomy	DC	4
Total nephrectomy	DC	2
Retroperitoneal packing	DC	3
Pelvic packing	DC	2
Mesentery hemostasis (suture)		2

Reconstructive procedures		
Colectomy with anastomosis	DC	5
Small bowel resection no anastomosis	DC	13
Gastric suture		5
Small bowel or colon suture		4
Small bowel resection + anastomosis		4
Bladder suture + cystostomy probe		1
Diaphragmatic suture		3



## Results Thoracic surgery

### Hemostatic procedures

Atypical pulmonary resection or « wedge »	11
Thoracic aorta clamping	3
Pericardotomy	3
Internal cardiac massage	2
Pulmonary hilum clamping	2
Intracardiac adrenaline injection	1



Dr Boddaert



### Results TRANSFUSION

- Red blood cells bags : 12
- French lyophilized plasma unit : 7
- Human fibrinogen : 5
- No whole blood transfusion  
(no donor)







### Mortality

- 5 casualties died at the SLM
- Mortality rate 3%
- 2 Lacerated craniocerebral injuries
- 2 Chest wounds
- 1 Diffuse shrapnel injury



## Conclusions



- Mortality <5%
- Proof of SLM concept
- Continuous management of equipment logistic ++
- Massive influx : TRIAGE
- Surgical versatility



# TRIAGE



# SUPPLY



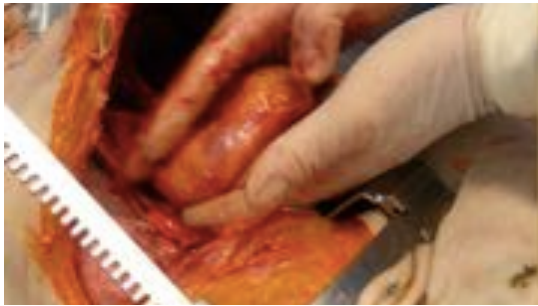
« CCP » UNITS



# STERILIZATION



# CACHIRMEX





# CeFOS



SOON...





# THANK YOU FOR OUR ATTENTION

